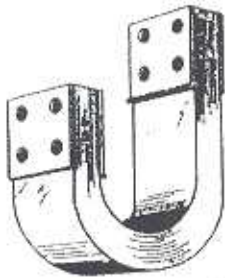


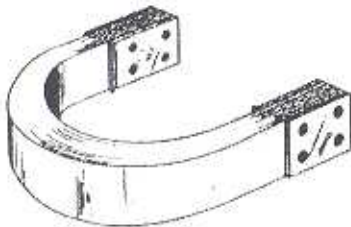
## LAMINATED SHUNTS

The RWCPSS Laminated Shunt Maximizes your shunt life and maximizes your current carrying capabilities.

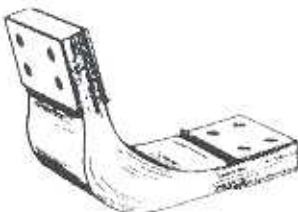
- Soldered Leaf Design
- Press Welded Mounting Plates
- Silver Plated
- Top Graded Copper Alloys
- Special Tin Plating Upon Request



*Laminated Shunt - "J" Shape*

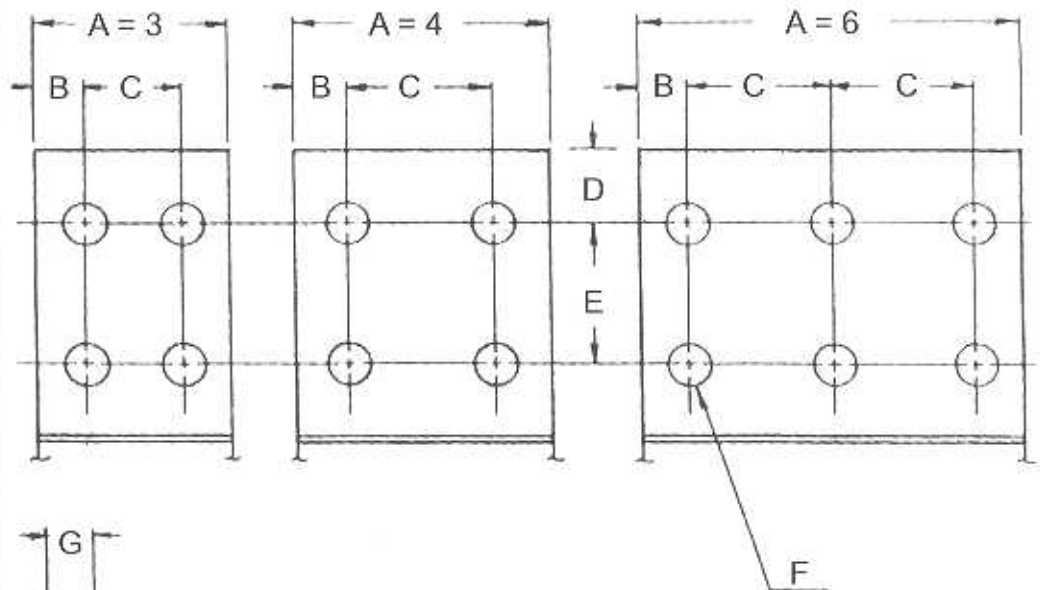


*Laminated Shunt - "C" Shape*



*Laminated Shunt - "V" Shape*

## LAMINATED SHUNT - ORDERING INFORMATION



### SPECIFY THE FOLLOWING

- A • Width \_\_\_\_\_
- B • Hole Location \_\_\_\_\_
- C • Hole Location \_\_\_\_\_
- D • Hole Location \_\_\_\_\_
- E • Hole Location \_\_\_\_\_
- F • Hole Diameter \_\_\_\_\_
- G • Thickness \_\_\_\_\_
- H • Inside Length \_\_\_\_\_
- I • Outside Length \_\_\_\_\_
- J • Quantity Required \_\_\_\_\_

OR SPECIFY RWC DRAWING NUMBER

#

**RWC PRODUCTION SUPPORT SERVICES, INC. - 989.667.2800**

1800 S. EUCLID AVE., BAY CITY, MI 48706

FAX 989.667.2801

WWW.RWCPSS.COM